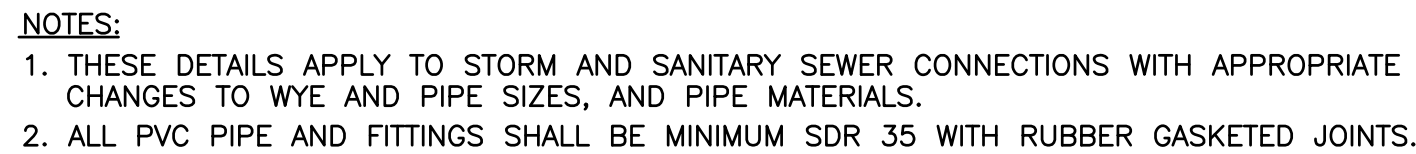
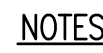
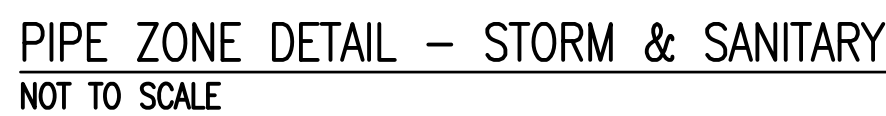
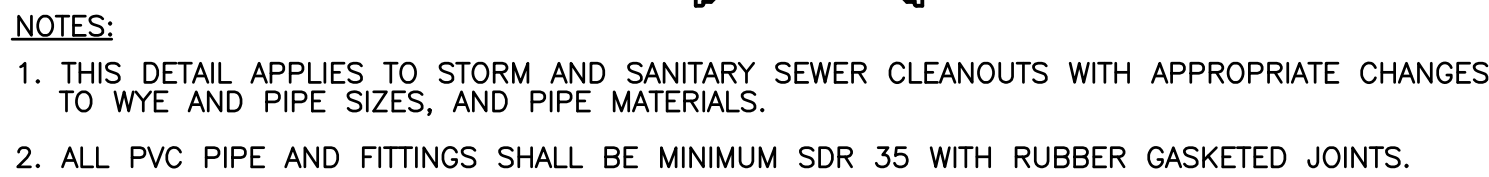


1



2)



1. PIPELINES WITH JOINTS THAT ALLOW A MANUFACTURED LENGTH OF PIPE TO BE PLACED IN THE TRENCH WITH THE PIPE JOINT ASSEMBLED/MADE IN THE TRENCH REQUIRE AN OPEN PIPELINE TRENCH THAT IS ONLY SLIGHTLY LONGER THAN THE LENGTH OF PIPE BEING INSTALLED. THE TOTAL LENGTH OF EXCAVATED TRENCH OPEN AT ANY ONE TIME SHOULD NOT BE GREATER THAN THE TOTAL LENGTH OF PIPELINE/UTILITY LINE THAT CAN BE PLACED IN THE TRENCH AND BACK-FILLED IN ONE WORKING DAY. NO MORE THAN 50 LINEAL FEET OF OPEN TRENCH SHOULD EXIST WHEN PIPELINE/UTILITY LINE INSTALLATION CEASES AT THE END OF THE WORKDAY. SOIL SUPPLEMENTS, SEED AND MULCH SHOULD BE APPLIED WITHIN SEVEN DAYS AFTER THE PIPELINE/UTILITY LINE IS INSTALLED.
2. WATER WHICH ACCUMULATES IN THE OPEN TRENCH IS TO BE COMPLETELY REMOVED BY PUMPING, WITH THE USE OF FILTER BAGS, BEFORE PIPE PLACEMENT AND/OR BACKFILLING BEGINS.

5



COMBINED ELECTRIC AND TELEPHONE SERVICE LINE

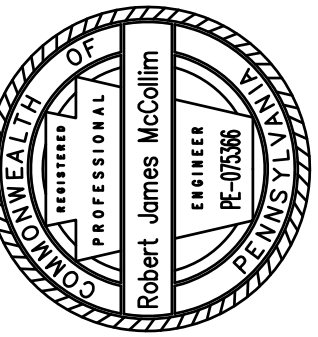
D = INSIDE DIAMETER
O.D. = OUTSIDE DIAMETER



D = INSIDE DIAMETER
O.D. = OUTSIDE DIAMETER



8



BY ACKNOWLEDGEMENT OR "SIGN-OFF" BY PARTIES TO THE CONSTRUCTION DRAWINGS DOES NOT CONSTITUTE ALTERATION OF LEASE TERMS.

THE INFORMATION CONTAINED IN THIS SET OF DOCUMENTS IS PROPRIETARY BY NATURE. ANY USE OR DISCLOSURE OTHER THAN THAT WHICH RELATES TO CLIENT NAME IS STRICTLY PROHIBITED. IT IS A VIOLATION OF LAW FOR ANY PERSON, UNLESS THEY ARE WORKING UNDER THE DIRECTION OF A LICENSED PROFESSIONAL ENGINEER, TO ALTER THIS DOCUMENT.

HAMPTON INN & SUITES
BAIR BOULEVARD
NEW STANTON, PA 15672
WESTMORELAND COUNTY, PENNSYLVANIA

REVISED PER MUNICIPAL COMMENTS	
1	7/11/2016
MARK	DATE
DESCRIPTION	

UTILITY DETAILS

SHEET NO. C5.2